



2018

2018/12/30

1959 2

1961 7

1987 2

300

50

1981

1984

1994

2015

2012

1

8

1  
3 4  
1100 7  
4 205 21  
125  
2018  
2017 11  
2015  
2015 44  
2018  
2018 10 31 2018

## 2018

1

2

3

4

5

6

7

1

2

3

4

5

1

2

1

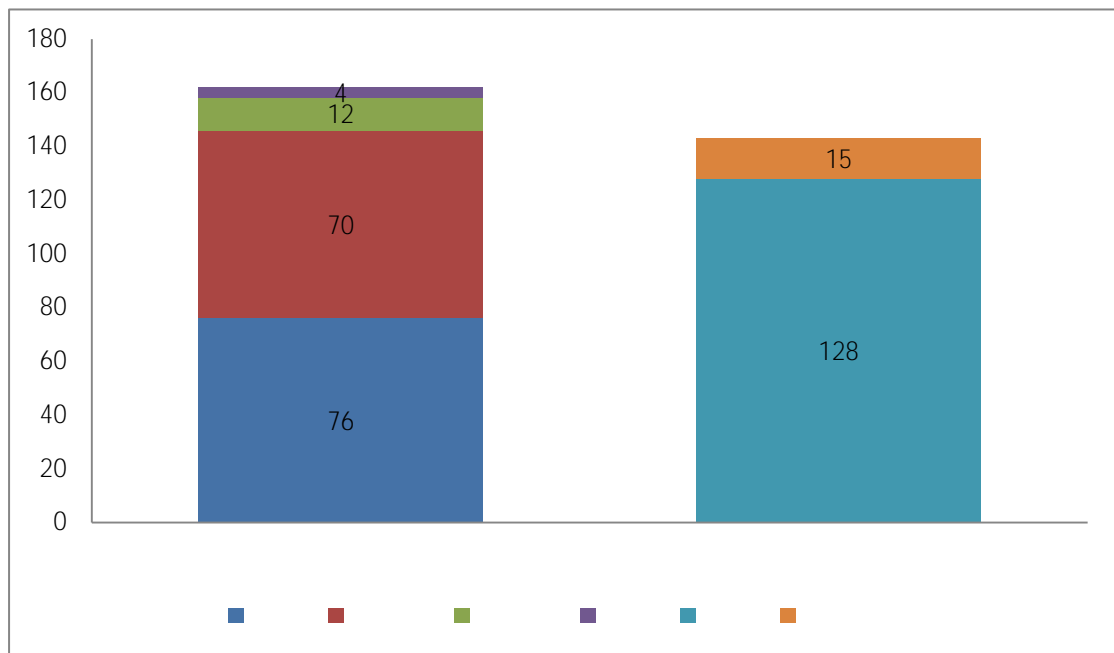
2

1

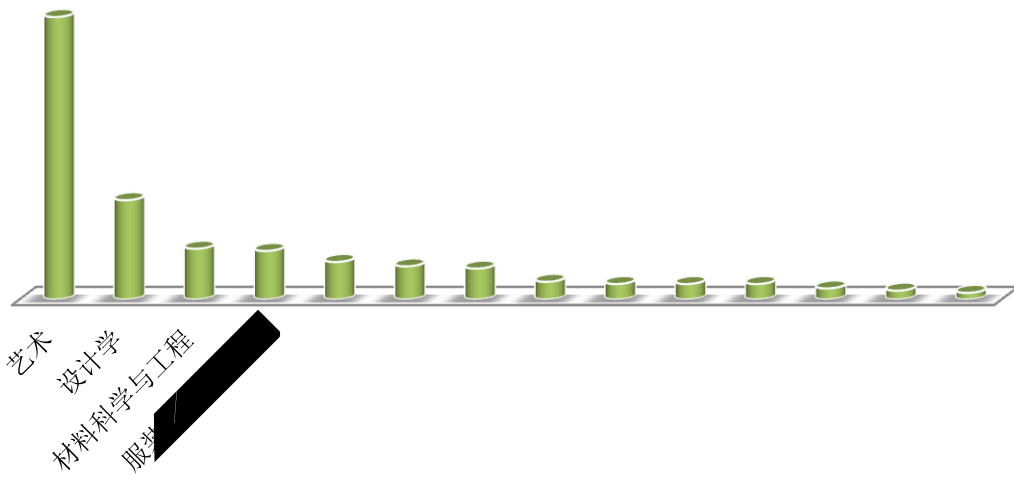
2

2018

2018	306	1
305		
162	143	
76	70	12
4		128
15		
	14	
2		



1.



2.

1

2018 10 31 2018  
 98.69%  
 10 31 3 1

	305	6	4	101	120	52	10	8	4	0
	1	0	0	1	0	0	0	0	0	0

1. 2018

2

2018                                  60                                  19.6%                                  246

80.4%                                  1 4

		60		246	
			%		%
		14	23.33	87	35.37
		43	71.67	148	60.16
		1	1.67	5	2.03
		0	0	4	1.63
		96.67%		99.19%	

2. 2018

3

11                                  100%

学位	专业	毕业生总数	已升学	已出国	签就业协议	签劳动合同	单位用人证明	自由职业	自主创业	在京待就业	回省待就业	就业率
博士	设计学	1	0	0	1	0	0	0	0	0	0	100.00%
硕士	材料科学与工程	23	1	0	5	13	1	2	0	1	0	95.65%
	纺织材料与纺织品设计	7	0	0	1	4	2	0	0	0	0	100.00%
	纺织化学与染整工程	14	0	0	2	10	2	0	0	0	0	100.00%
	服装设计与工程	22	0	0	6	14	0	1	1	0	0	100.00%
	国际商务	15	0	2	4	2	7	0	0	0	0	100.00%
	化学工程与技术	3	0	0	0	3	0	0	0	0	0	100.00%
	会计学	5	0	0	2	3	0	0	0	0	0	100.00%
	机械电子工程	7	0	0	4	3	0	0	0	0	0	100.00%
	美术学	8	1	0	1	5	0	0	1	0	0	100.00%
	企业管理	7	0	0	3	4	0	0	0	0	0	100.00%
	设计学	45	0	0	21	13	9	1	0	1	0	97.78%
	艺术	128	2	2	46	39	26	6	5	2	0	98.44%
	艺术学理论	17	2	0	4	7	4	0	0	0	0	100.00%
中国少数民族艺术	4	0	0	2	0	1	0	1	0	0	100.00%	

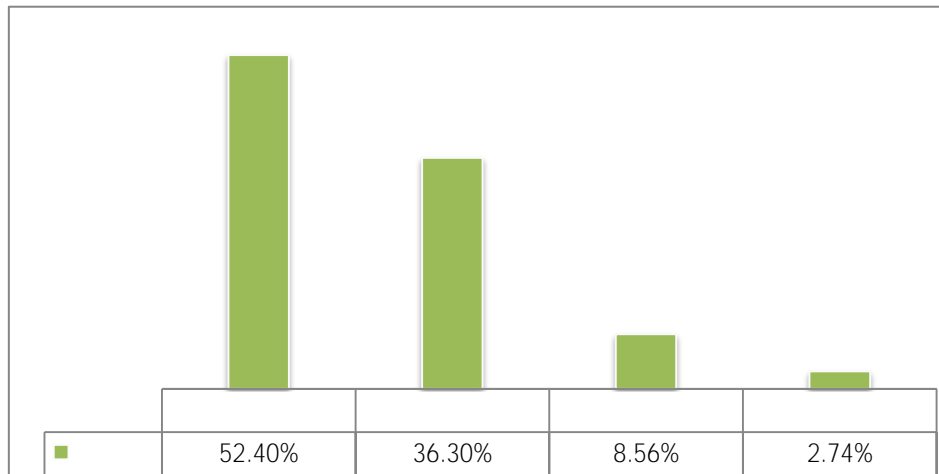
3. 2018



4

2018

160

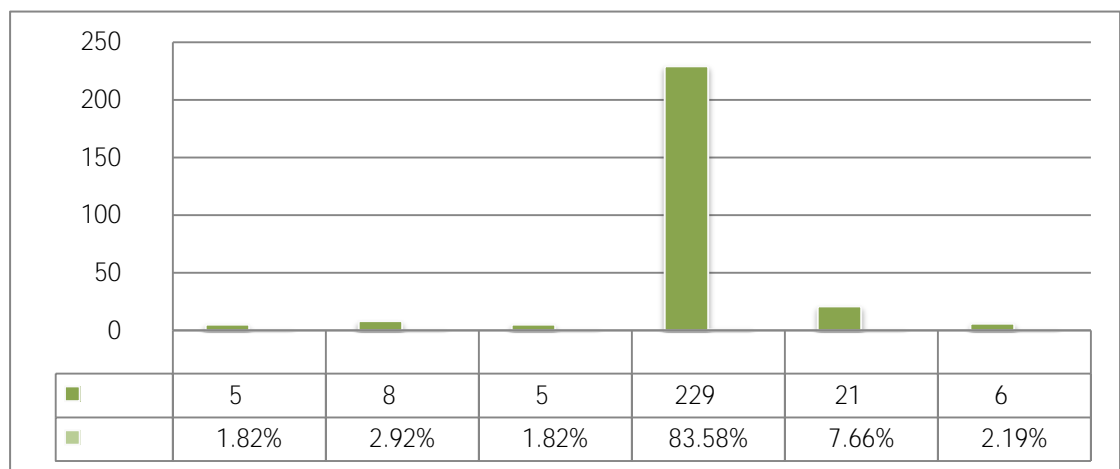


3. 2018

5

2018

4



4. 2018

6

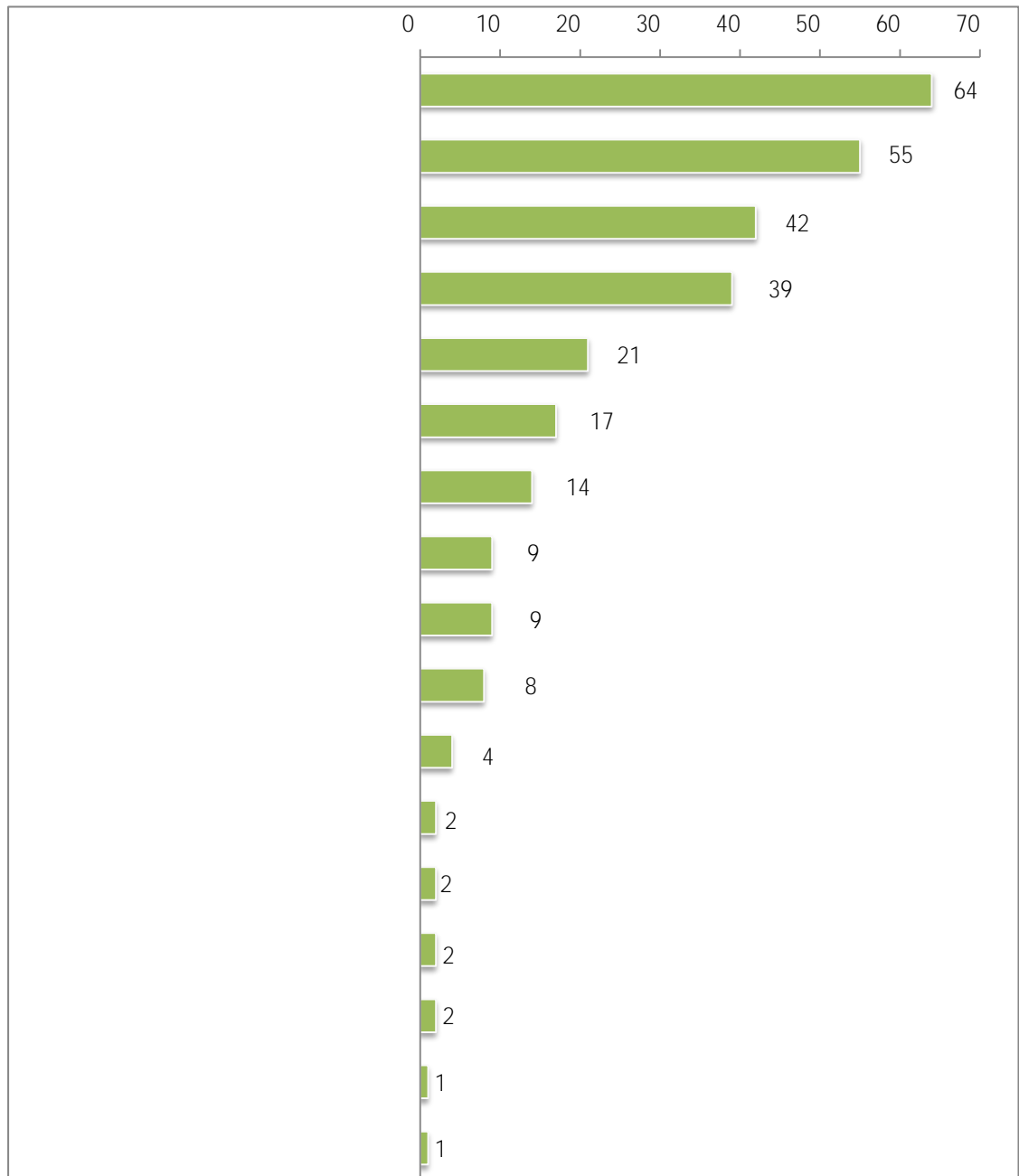
2018

21.92%

18.84%

14.38%

13.36%



5. 2018

7

2018	10	6
1.96%	4	
	2	1.31%

1

			2016	229	2017
289	306				
2016	98.2%	2017	98.96%	2018	98.69%
98%				2018	
	33%		13		

2

				2016	2018
	44	44	72		
60	45	94			

3

45.41% 61.25% 52.40%

	2016	19	2017	22	2018	34
8.3%	7.6%	11.1%				
			2018			15
11		7				
				2018		
4						
						2016
	49.33%	2017	69.65%	2018		83.58%
5						
	2018			8		3

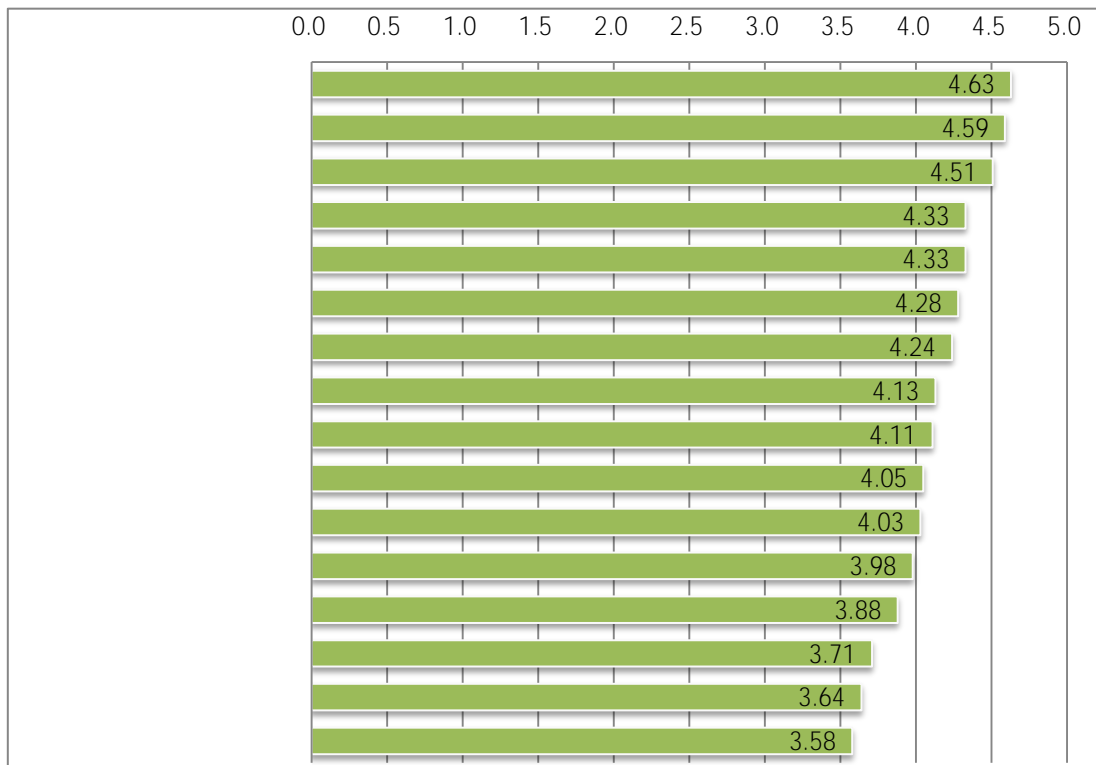
2018

224

80

1

2018



6. 2018

2

2018

26

7

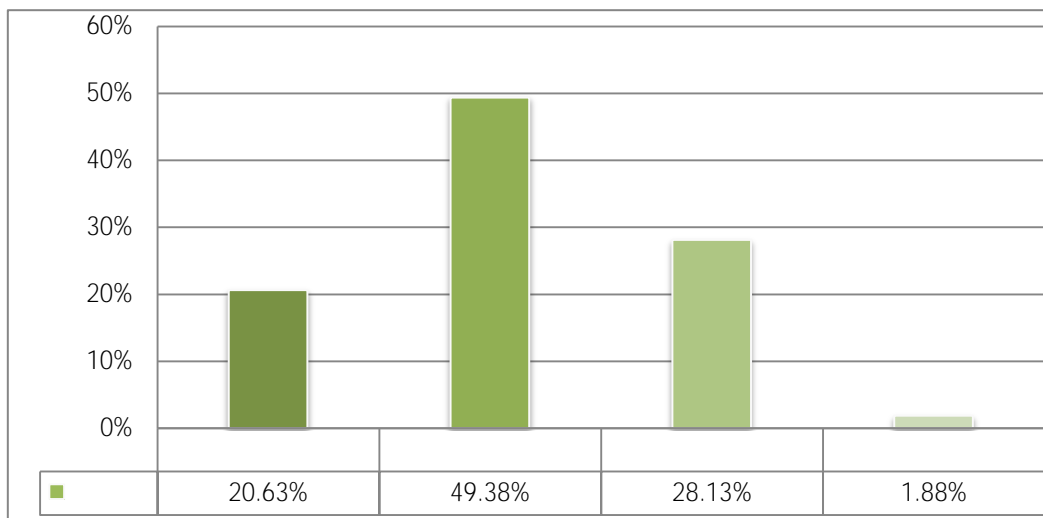
4

2800

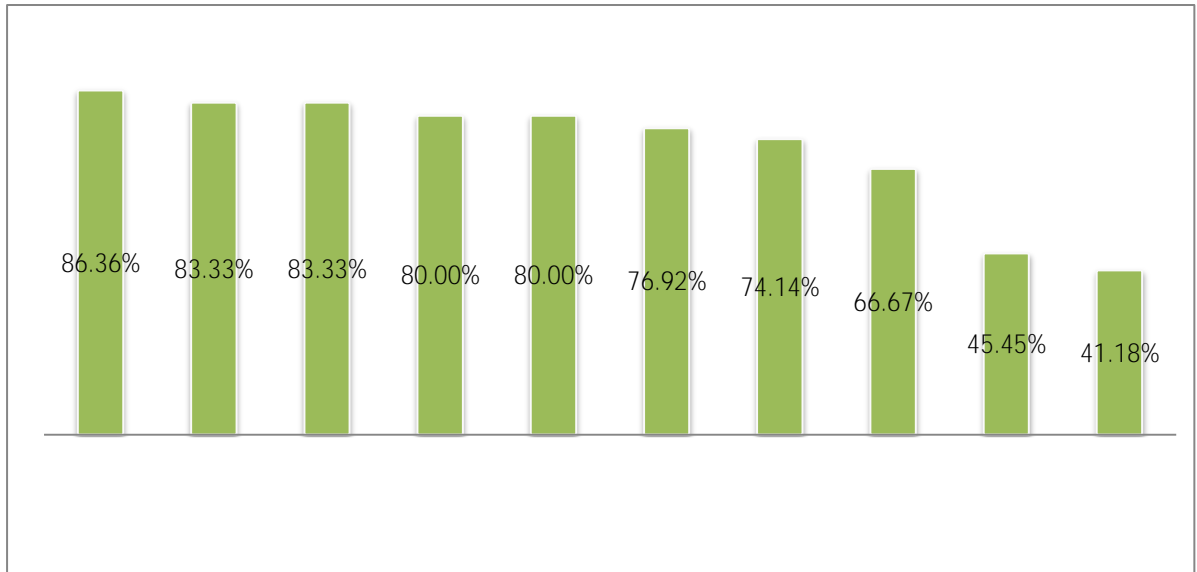
1

2018

70.01%



7. 2018



8. 2018

2

2018

1

2018

91.52%

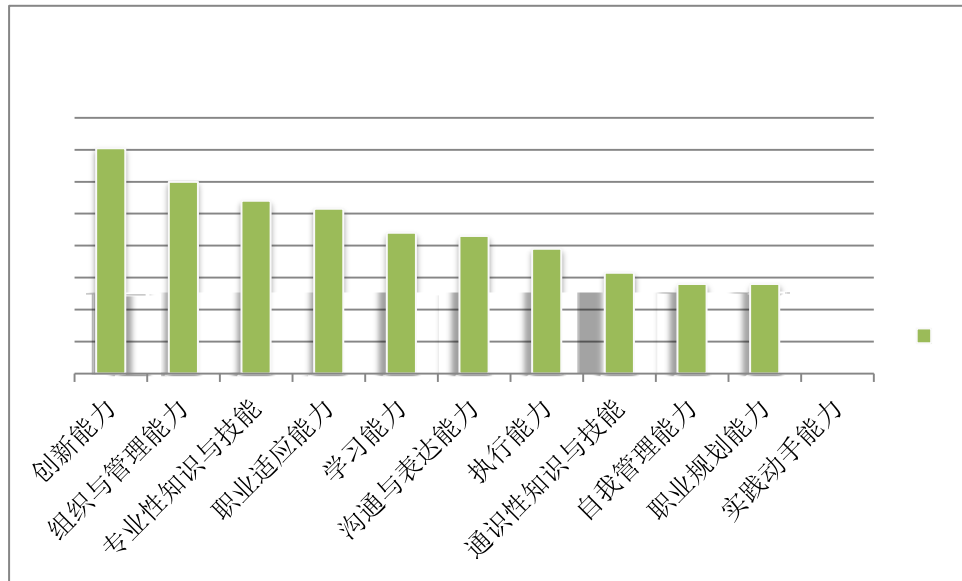
2018

96.61%

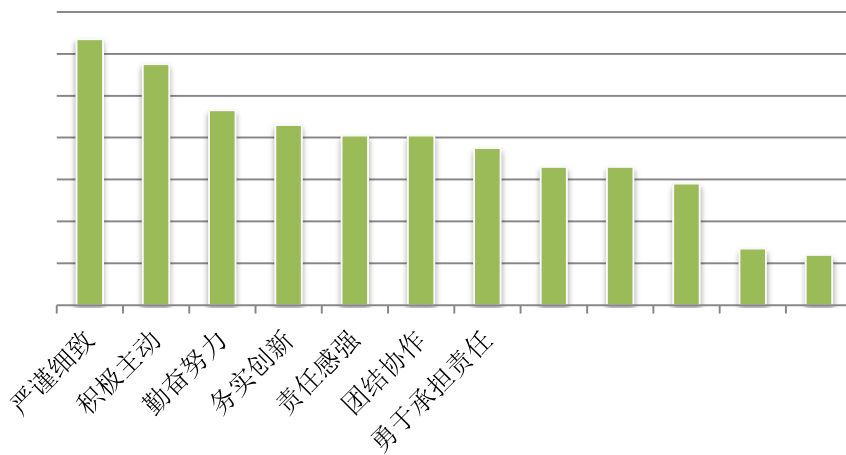
2018

94.91%

2



9.



10.





90



11.

QQ

2019



12.

2019

30

---

2016 10

2017 17

40

18

45

90%



13. “ ”

2018

2018