



北京服装学院

BEIJING INSTITUTE  
OF FASHION TECHNOLOGY

|与|美|同|行|

# 北京服装学院

## 2020届毕业生就业质量年度报告

北京服装学院  
2020年12月

# 目 录

序 言 .....	1
一、毕业生就业基本情况 .....	3
1. ....	4
2. ....	5
3. ....	10
4. ....	12
5. ....	14
6. ....	14
7. ....	14
二、毕业生就业创业工作措施 .....	15
1. ....	16
2. ....	17
3. ....	21
4. ....	24
5. ....	27
三、对教育教学的反馈 .....	30
1. ....	31
2. ....	31
3. ....	32
4. ....	33
5. ....	33

# 序 言

300

——

JANE REPLAY

FRANCES CORNER

CAROL ANN PRIEST

2008

2009

60

2011

2014

2014 APEC

2016

2018

40

8

2019

70

60

(IFFTI)

CUMULUS

IFFTI

B+

B+

2019

6

CEOWORLD

2020

1

Grace Chen UOOYAA

2020

2020 2

2013 25

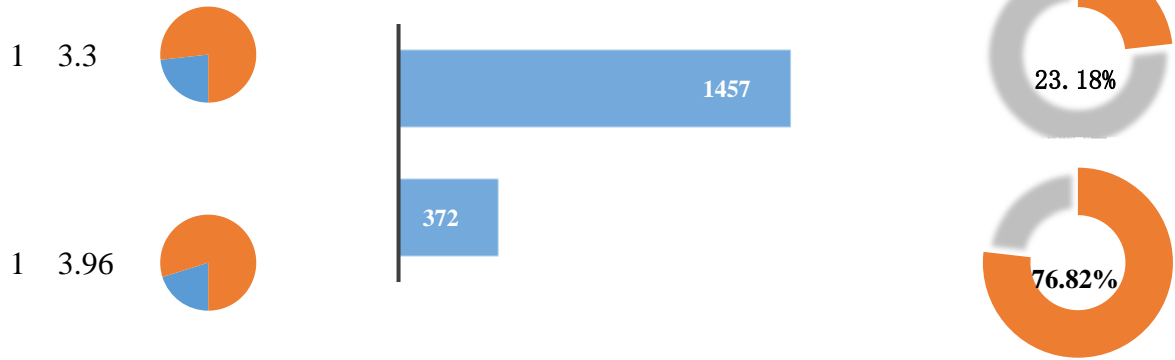
2020

## 一、毕业生就业基本情况

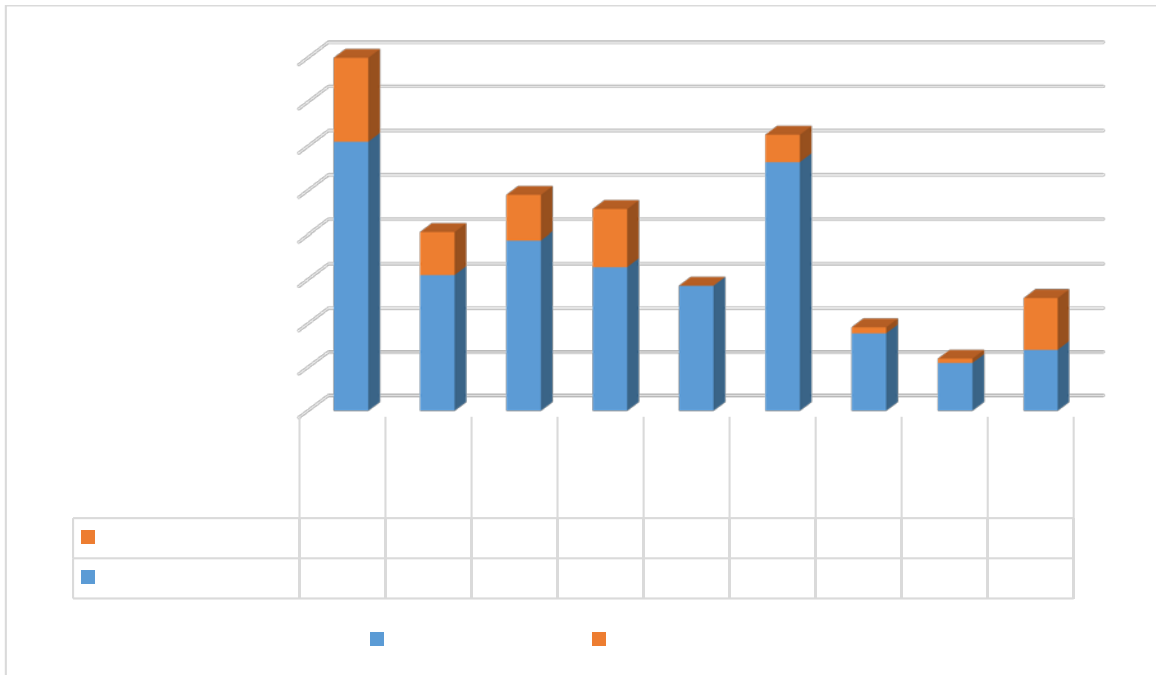
2020 10 31

1.

	2020		1829	
	1457	79.66%	372	20.34%
414	22.64%	1415	77.36%	1
3.42	424	23.18%	1405	76.82%



1



2

2.

2020	10	31	2020	87.75%
			26.62%	
27.17%			0.76%	
11.65%		5.52%	6.83%	
9.19%			86.2%	
93.82%				

1

		%		%		%
	<b>1312</b>	<b>71.73</b>	<b>978</b>	<b>67.13</b>	<b>334</b>	<b>89.78</b>
	144	7.87	89	6.11	55	14.78
	343	18.75	210	14.41	133	35.75
	7	0.38	7	0.48	0	0.00
	7	0.38	7	0.48	0	0.00
	101	5.52	76	5.22	25	6.72
	497	27.17	418	28.69	79	21.24
	213	11.65	171	11.74	42	11.29
	<b>293</b>	<b>16.02</b>	<b>278</b>	<b>19.08</b>	<b>15</b>	<b>4.03</b>
	125	6.83	118	8.10	7	1.88
	168	9.19	160	10.98	8	2.15
	<b>224</b>	<b>12.25</b>	<b>201</b>	<b>13.79</b>	<b>23</b>	<b>6.19</b>
	107	5.85	87	5.97	20	5.38
	117	6.40	114	7.82	3	0.81
	<b>1829</b>	<b>100.00</b>	<b>1457</b>	<b>100.00</b>	<b>372</b>	<b>100.00</b>
		<b>87.75%</b>		<b>86.20%</b>		<b>93.82%</b>

1

2020

89.61%

87.21%

2

	<b>314</b>	<b>998</b>	<b>246</b>	<b>732</b>	<b>68</b>	<b>266</b>
	51	93	36	53	15	40
	77	266	51	159	26	107
	7	0	7	0	0	0
	0	7	0	7	0	0
	21	80	16	60	5	20
	108	389	93	325	15	64
	50	163	43	128	7	35
	<b>57</b>	<b>236</b>	<b>52</b>	<b>226</b>	<b>5</b>	<b>10</b>
	30	95	27	91	3	4
	27	141	25	135	2	6
	<b>43</b>	<b>181</b>	<b>41</b>	<b>160</b>	<b>2</b>	<b>21</b>
	23	84	22	65	1	19
	20	97	19	95	1	2
	<b>414</b>	<b>1415</b>	<b>339</b>	<b>1118</b>	<b>75</b>	<b>297</b>
	89.61%	87.21%	87.91%	85.69%	97.33%	92.93%

2

2020

86.08%

88.26%



	<b>309</b>	<b>1003</b>	<b>296</b>	<b>682</b>	<b>13</b>	<b>321</b>
	71	73	65	24	6	49
	76	267	71	139	5	128
	0	7	0	7	0	0
	0	7	0	7	0	0
	11	90	11	65	0	25
	117	380	116	302	1	78
	34	179	33	138	1	41
	<b>56</b>	<b>237</b>	<b>56</b>	<b>222</b>	<b>0</b>	<b>15</b>
	13	112	13	105	0	7
	43	125	43	117	0	8
	<b>59</b>	<b>165</b>	<b>59</b>	<b>142</b>	<b>0</b>	<b>23</b>
	40	67	40	47	0	20
	19	98	19	95	0	3
	<b>424</b>	<b>1405</b>	<b>411</b>	<b>1046</b>	<b>13</b>	<b>359</b>
	<b>86.08%</b>	<b>88.26%</b>	<b>85.64%</b>	<b>86.42%</b>	<b>100.00%</b>	<b>93.59%</b>

3

2020 80%

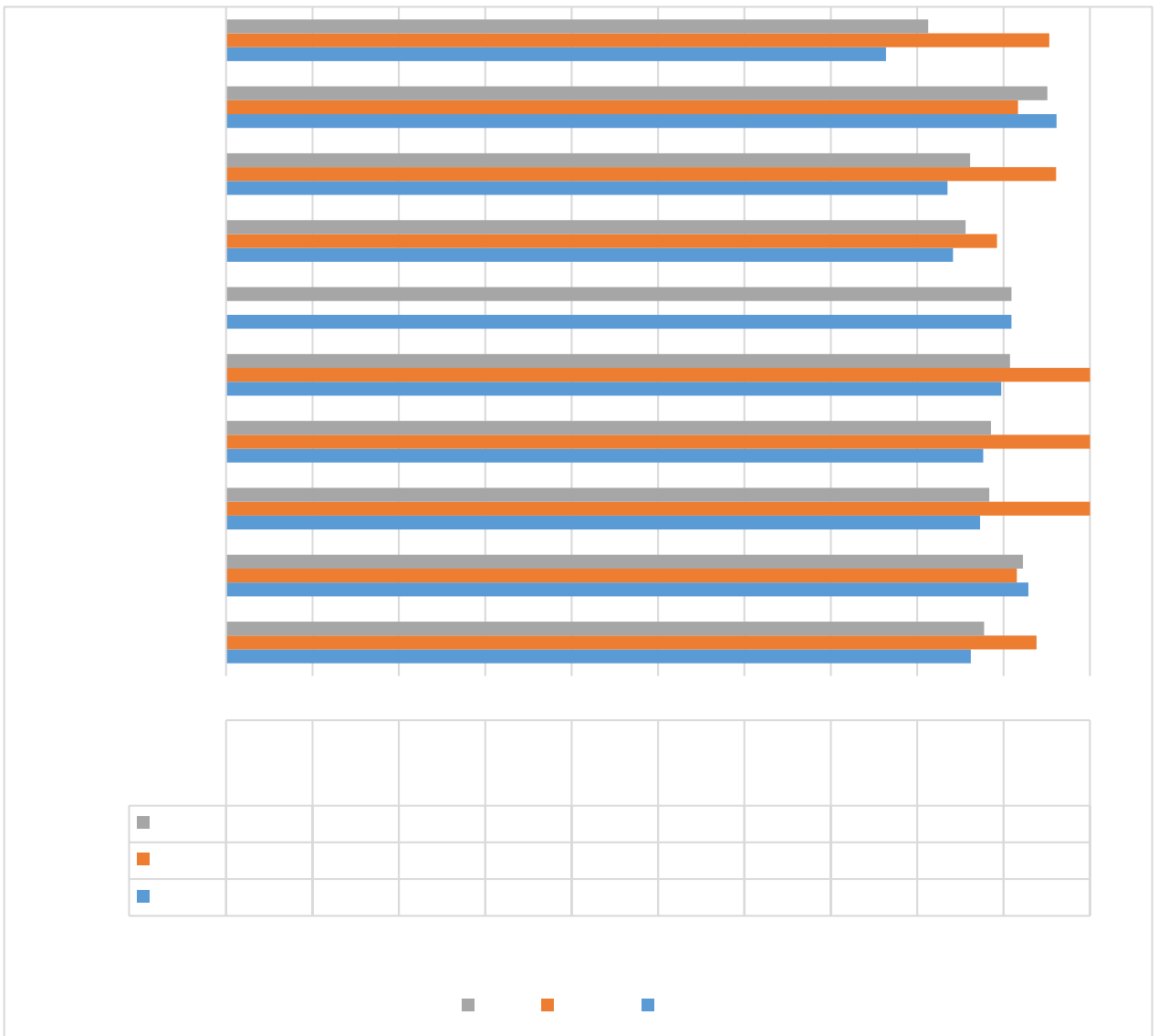
95.07% 92.25% 90.91%

90.73% 90% 96.13%

92.86% 90.91%

90%

100%



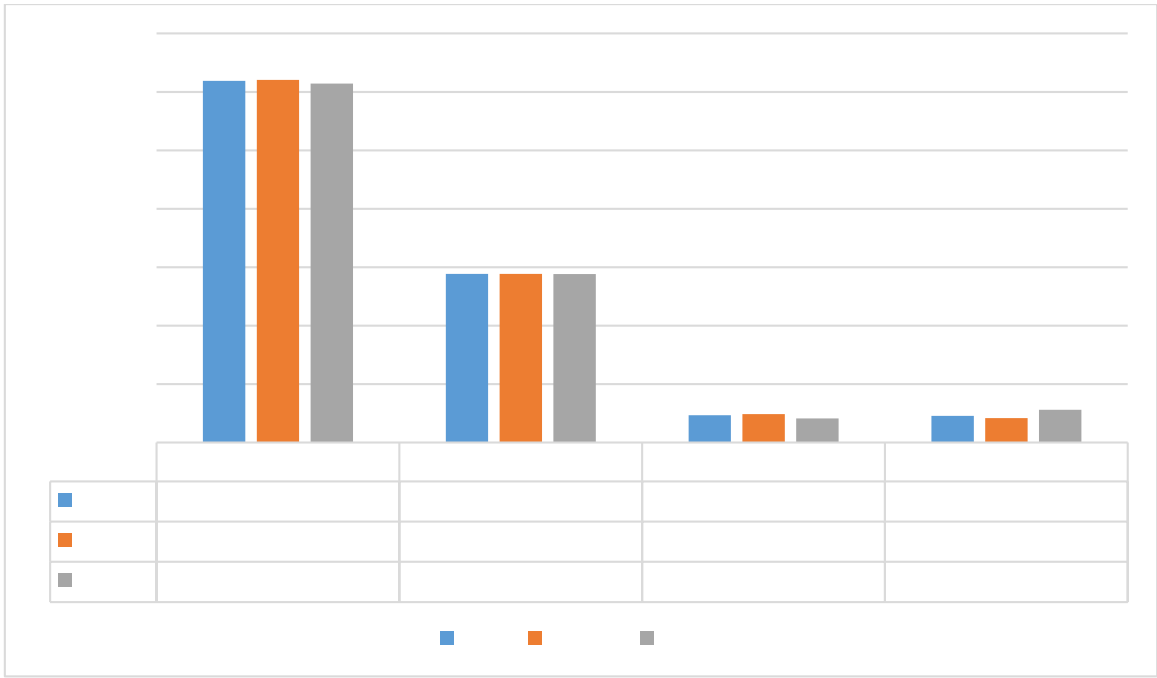
3

90%

			%				%
		78	76.92			23	95.65
		227	76.21			132	96.21
		305	76.39			155	96.13
		44	84.09			57	80.7
		45	77.78			41	75.61
		54	79.63			24	91.67
		51	92.16			42	92.86
		194	83.51			164	84.15
		17	100			53	83.02
		39	82.05			84	91.67
		8	100			36	86.11
		62	95.16			57	94.74
		17	82.35			52	90.38
		143	90.91			282	89.72
		44	84.09			28	89.29
		45	91.11			22	90.91
		89	87.64			20	100
		55	87.27			70	92.86
		55	87.27			1457	86.20

100%

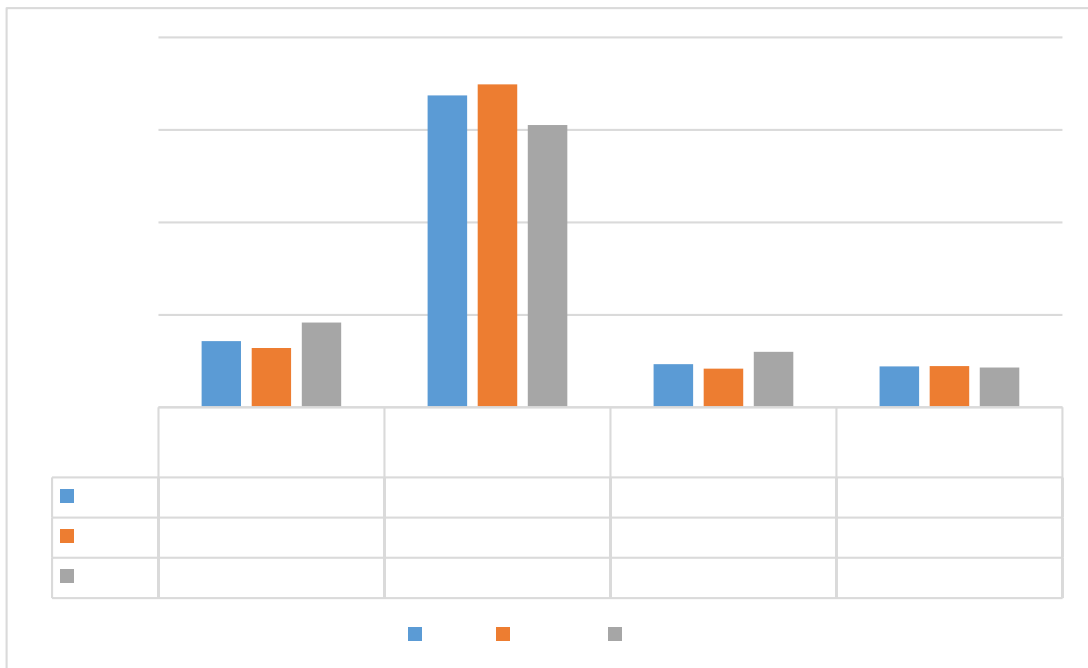
			%				%
		21	100			8	75
		27	92.59			40	95
		58	94.83			48	91.67
		106	95.28			5	100
		19	100			10	100
		7	100			16	100
		16	100			31	100
		4	100				



4

2

2020



5

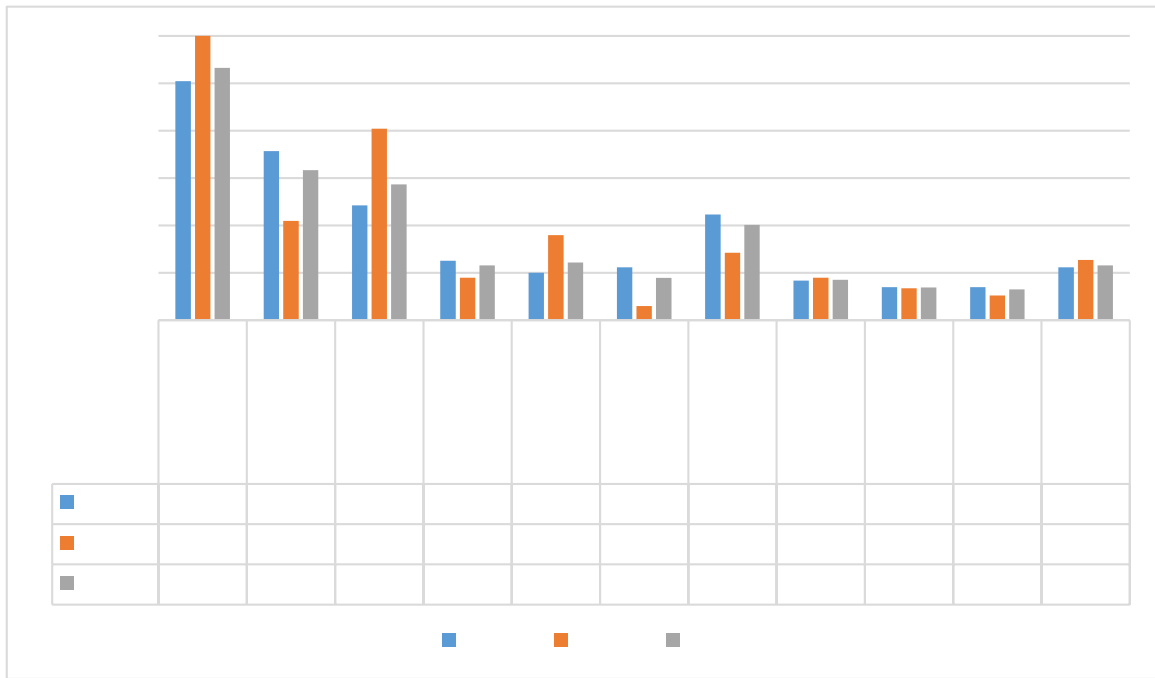
3

2020

15.85%

14.33%

10.06%



6

4.

2020

293

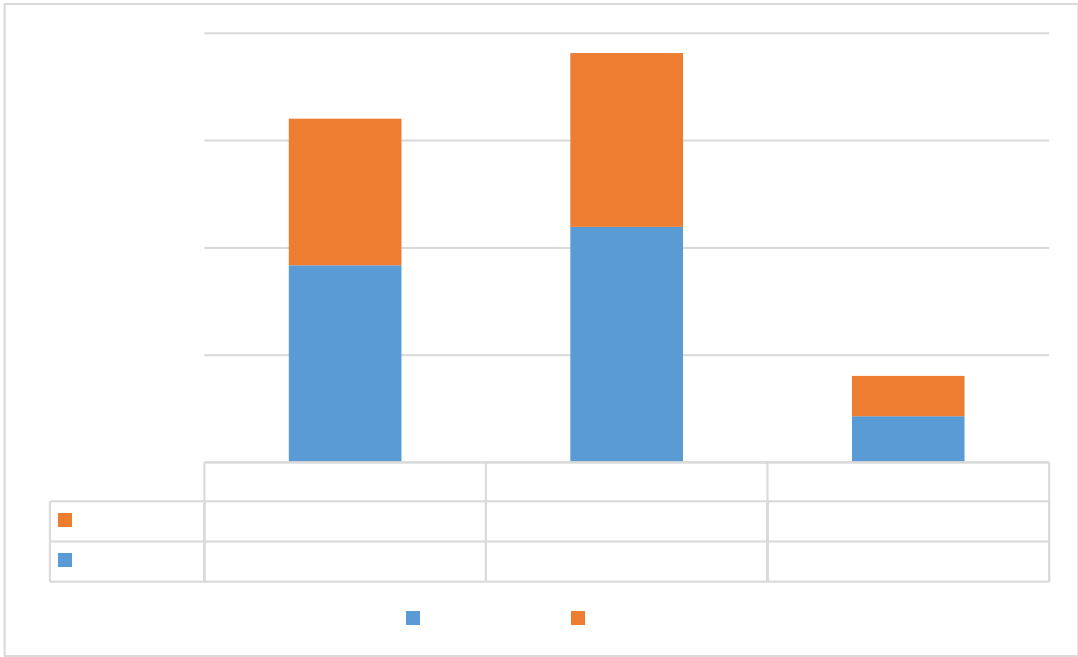
16.02%

125 6.83%

168 9.19%

118 8.10%

160 10.98%



7

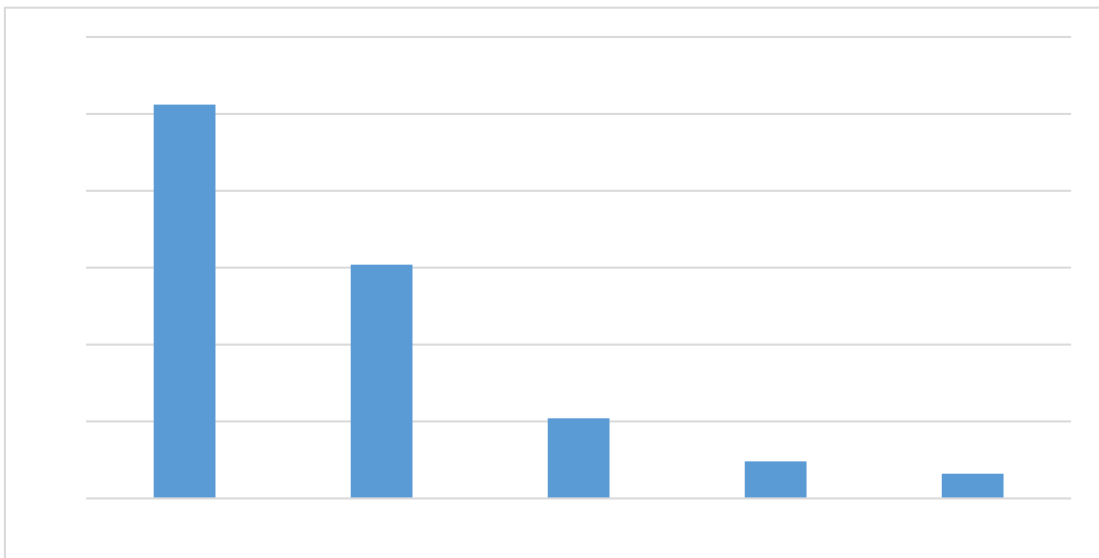
1

125 2020

64 51.2%

40

32%



8

2  
2020 168 60 108  
64.29% 35.71%

5.  
2020 7 7  
22 1 2

6.  
2020

7.  
2020 101 5.52%  
76 25

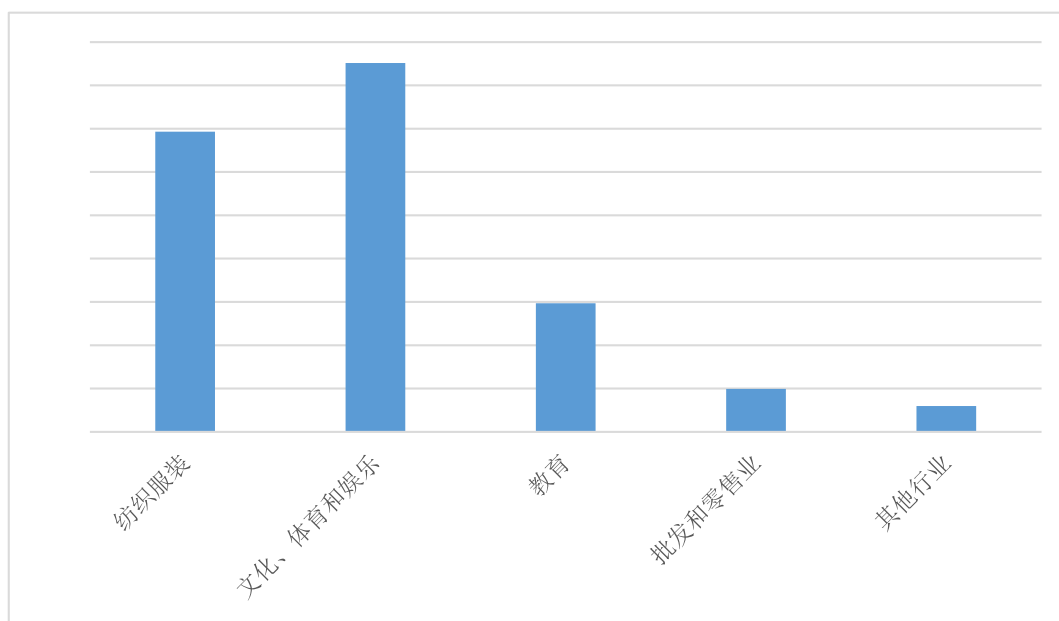


2020

42.58%

34.65%

14.85%



9

## 二、毕业生就业创业工作措施

1.

2020

2020

2.





offer

3.

	2019	2020
3	282	50
	2020	2020
3	546	





,

4.

+

2020

2020

5.

2020

160

30



VC

+

2020

2020

5G

2020

2020

### 三、对教育教学的反馈

2019

2020

2020

2019



1.

2020

/

/

2020

52% 48%

2019

80%

90%

2.

2020

83.67%

2019

2013-2019

3.

4.

2013 2019 2019 93.83%

5.

95%

98%